



INFORMATION RELEASE

Office of the Director

ARKANSAS STATE HIGHWAY AND
P. O. Box 2261 – Little Rock, Arkansas
Telephone (501) 569-2227

TRANSPORTATION DEPARTMENT
ArkansasHighways.com
Twitter: @AHTD

Contact:
Danny Straessle / Krista Sides

NR 16-229-02
July 25, 2016

UPDATE!!!

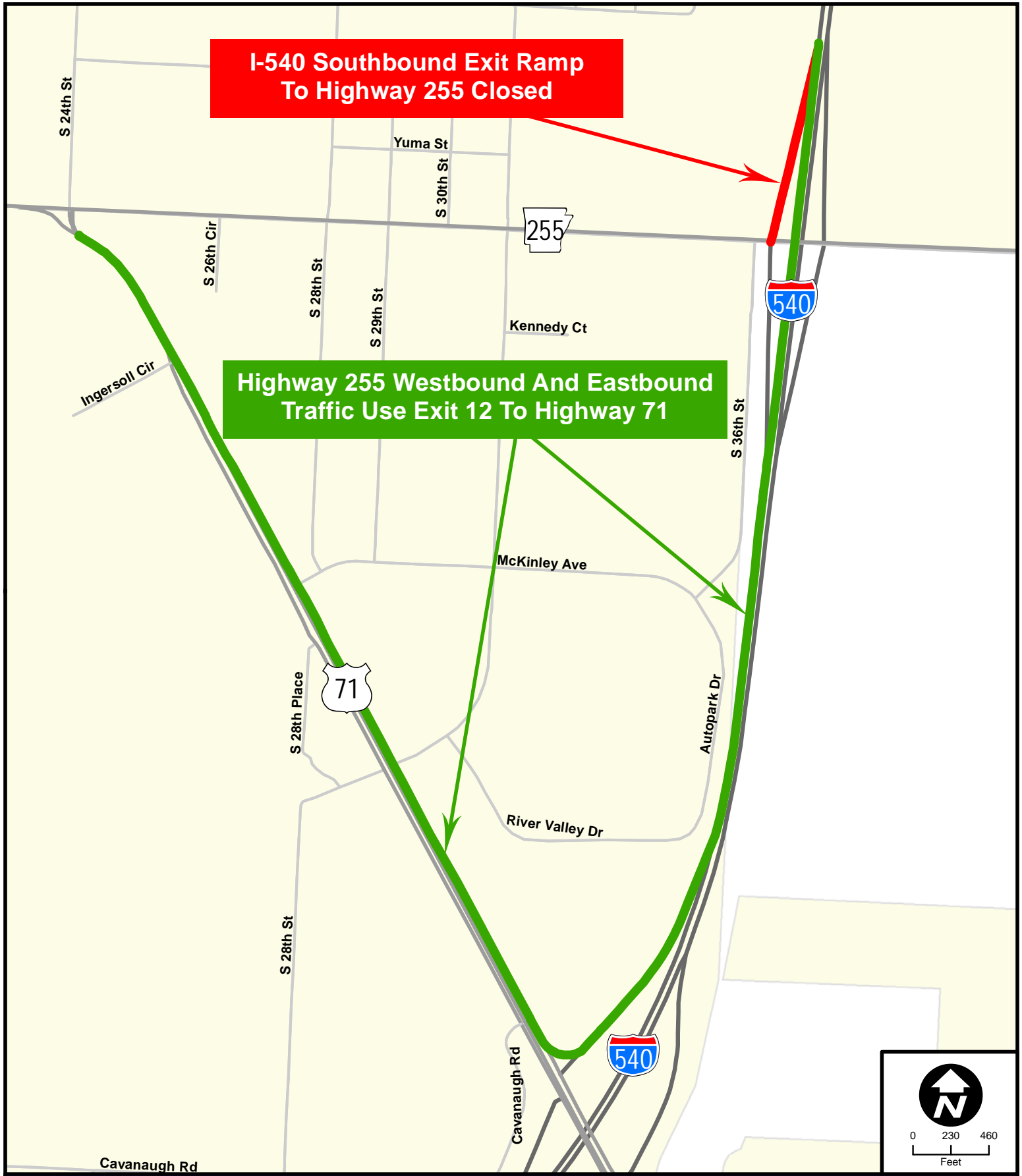
Improvements to Interstate 540 Requires an Overnight Lane Closure in Sebastian County

SEBASTIAN COUNTY (7-25) – Construction work on the on ramp that carries traffic from southbound I-540 to State Highway 255 requires an overnight lane closure, according to Arkansas State Highway and Transportation Department (AHTD) officials.

The ramp carrying traffic from southbound I-540 to State Highway 255 will be closed between **9:00 p.m. and 6:00 a.m. on Monday, July 25**. Traffic will use the ramp as normal outside of the closure hours. This work was originally scheduled to occur on Sunday, July 24, but was delayed due to weather.

The closure only affects traffic traveling to State Highway 255 by way of southbound I-540. Motorists will be directed by signage to follow the detour route instead. The attached map illustrates this detour route.

Drivers should exercise caution when approaching and traveling through all highway work zones. Additional travel information can be found at IDriveArkansas.com or ArkansasHighways.com. You can also follow us on [Twitter @AHTD](https://twitter.com/AHTD).



**I-540 Southbound Exit Ramp
To Highway 255 Closed**

**Highway 255 Westbound And Eastbound
Traffic Use Exit 12 To Highway 71**

Interchange Detour
Fort Smith, Sebastian County

